

“Shooting” Scanning
Technology



Small, lighter and
Faster

3 Different Tips
35°, 45° & 55°



Truly Open
System

AI Intelligent
Scanning



Automatic
Calibrator



**E-Tech Intraoral Scanner bring an excellent
experience with the most updated technology.**

Promotion

Limited Time & Qty

At E-Tech

Only

 E-Tech

1



FREE

FREE 3D Model
Printing

*non-metal restorations only

Only at



\$300 credit each month
for minimum \$1,500 lab
fee for 30 months.

It is \$9,000 value.

You got a **FREE**
scanner.

Now only **\$9,900**

Original Price \$12,000

The image shows three white pens with purple caps lying on a white surface. The pens are arranged in a slightly overlapping manner, with one in the foreground and two behind it. The lighting is soft, creating gentle shadows. The text 'Product Parameters' is overlaid in a bold, purple font on the left side of the image.

Product Parameters

2



Smaller, Faster and More Affordable!

Overall Size

216 x 40 x 36 mm

Tips End

19.6 x 14.6 mm

Autoclavable

Field of View

18 x 16 mm

Depth of Field

20 mm

Patents

40+

Certificates

CE ISO FDA

Interface

USB3.0

Data Output

STL PLY PTY

*encrypted data available

1 - 2 min

Full Arch Scanning

3 types

Different Angle Tips

10 μ m

More Accurate

246g

Aviation Aluminum

PRODUCT INFORMATION

Acquisition Technology	Staring Scan
Camera Number	x 3
Scan Field	18x16mm
Scan Depth	20mm
Precision	5µm
Accuracy	10µm
Color	Full HD
Anti Fog System	Intelligent Heating
Full Jaw Scanning Time	1–2 min
True Color	Yes
Handpiece Enclosure	Aviation Aluminum Alloy
Handpiece Dimension	216 x 40 x 36 mm
Handpiece Weight	226g (246g with tip)
Tip Types	3types (N/M/D)
Number of Tips included	5
Autoclave Cycle for Tips	30–50 times
Calibrator	Automatic
Scanning Control	Foot Pedal
Image Transfer Interface	USB3.0
Cable Length (m)	2m
Cart Touchscreen	Optional
Power Supply Type	AC/DC Medical Power Adapter
Supply Voltage (V)	100–240V/50–60Hz
Supply Current (A)	0.7–1.5A
Storage Temperature (°C)	–10° – 55°C
Operating Temperature (°C)	15°–30°C

AFTERSALES

Standard Warranty	1 year
Extend Warranty	2–3 years available

REGULATORY (Documentation & Certification)




Certification	CFDA/CE/ISO13485/FDA/ INMETRO/ANVISA, etc
---------------	--

SOFTWARE

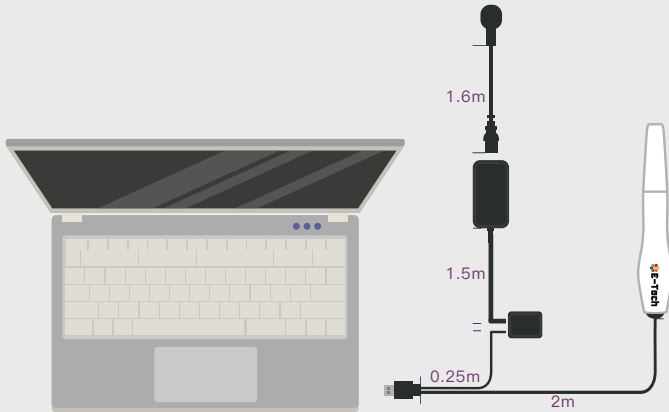
Treatment for	Orthodontics, Implant, Restoration, etc
Image Store	Yes
3D Data Preview	Yes
Output Files	STL, PLY, PTY (encrypted for user)
Cloud Service	Yes
Cloud Service Price	5GB/free
Direct Compatibility with Dental CAD	Exocad*
Main Image Processing Tools	Trim/Edit/Recover/Lock, etc.
Margin Line Drawing	Yes
Occlusal Matching	Yes
UnderCut	Yes
Data Comparing	Yes
AI Technology	Auto Tissue Remove, Overlapping Correct, etc.
Software Licence	Free
Software Upgrade	Free
API	Available
Scanning Feedback	Music

*All names, logos, brands and other trademarks featured or referred to within this brochure are the property of their respective trademark holders.

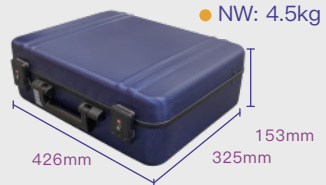
PC/Laptop IT Requirements

OS	 Windows10*64 bit
CPU	 Intel Core i7-10870H/ Intel Core i7-10875H/ Intel Core i7-11800H
GPU	 GTX1660TI/RTX2060/RTX3060
RAM	16G or 32G
ROM	recommend 512G SSD or above
Interface	USB 3.0

Cables Diagram



Box Diagram



Features



3

Product Features



AI Technology, much smarter,
improve a lot of scanning experience



3 Different tips, meet more demands
of different applications



Much smaller, very easy to operate



Clear margin line, full HD color,
high accuracy



Fast scanning speed, easy to learn
and use



Powder-free and true color scan

Application Features

● Efficient Treatment Experience

Reproduce the real state of teeth
Accurate anatomical features
3D high-definition color, visual communication
Easy and exciting treatment experience

● Accurate Shoulder Margin

Clear and easy to identify margin lines
Compatible with CAD software
Real-time accurate display
Improve the success rate of visits

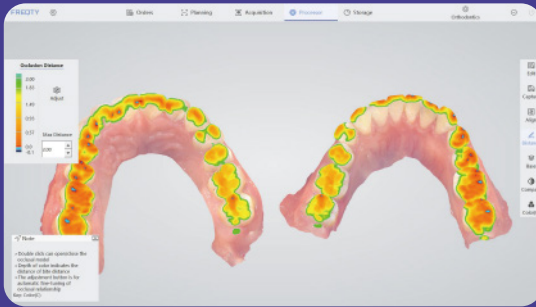
● Convenient Preparation Check

Shadow detection for better preparation
Clear occlusion registration check
Convenient tools for clinics and laboratories
Adjust and correct production in time

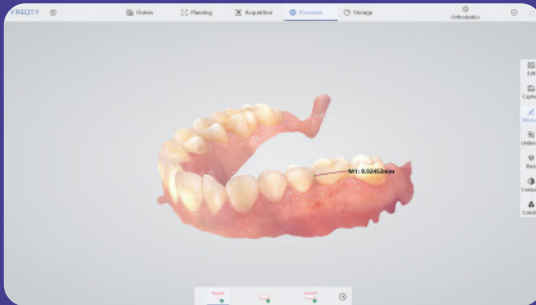
● Revolutionary Improvement *

Scanning speed improve 50%
Handpiece weight decrease 50%
Data accuracy improve 30%
Height of tips decrease 14%

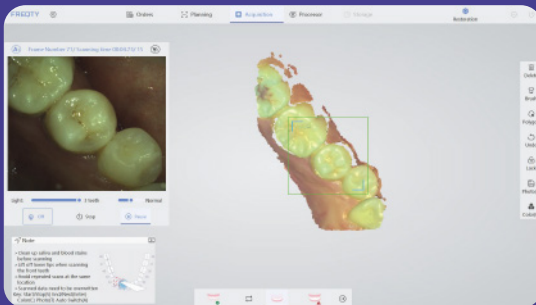
*Comparing to the P1 prototype



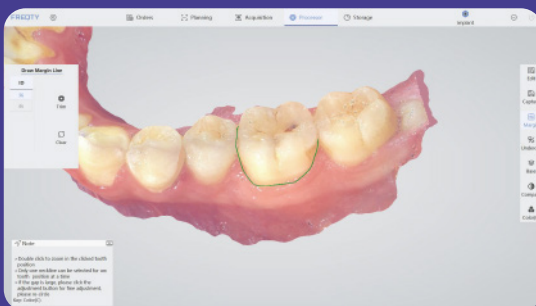
Bite Check



Teeth Measurement

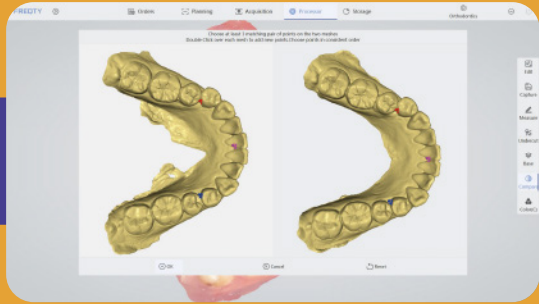


2D Images Store



Margin Line Drawing

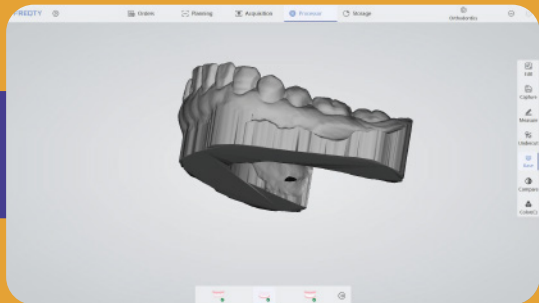
Cases Comparison



Undercut



Base Adding



Direct Export into Exocad*



*All names, logos, brands and other trademarks featured or referred to within this brochure are the property of their respective trademark holders.



User-Friendly Function

Practice Mode

Music Feedback

Enhanced Scanning Mode

Black Teeth/Yellow Teeth Mode

Images Capture

Case Import



Applications

4

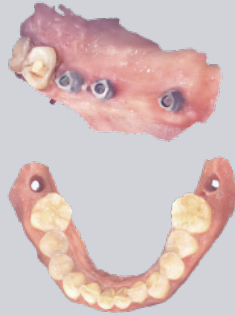
● Restoration

Accurate and clear shoulder margin brings efficient design, and high-definition color images help dentists effectively distinguish between gingiva and teeth. One visit, immediate restoration.



● Implant

Fast scanning with a large field of view, easily capture 3mm data of cuff, and accurately scan of metal path pin. No need to do repeat impression and improve patient's treatment experience.



● Orthodontics

High accuracy of the full dentition, restore the real state of full arch. Get orthodontic treatment quickly, and save time for more patients.



Intraoral Scanner Side by Side Comparison

E-Tech JC-2



Medit i500



3shape Trios 3 wireless



Carestream CS3600



	E-Tech JC-2	Medit i500	3shape Trios 3 wireless	Carestream CS3600
Tip Size (mm)	19.6 x 14.6	19 x 15.2	23 x 20	20 x 17
Wand Weight	246 g	276 g	340 g	325 g
Scan Method	12	Tringulation	Confocal Laser Technology	Tringulation
Full-Month Scan Time (U+L+B)	3 min	5 min	5 min	8-10 min
Accuracy	10µm	10µm	10µm	10µm
System	Open	Open	Semi-open	Open
Cloud Services	Included	Included	Included	N/A
User Fees (USD)	\$ 0	\$ 0	\$ 3,000	\$ 0
MSRP (USD)	\$ 9,900	\$ 18,000	\$ 30,000	\$ 22,000







E-TECH
Easy to Hold
with Advanced Operation!



E-Tech Intraoral Scanner bring an excellent experience with the most updated technology.

Contact Us

-  7801 Telegraph Rd., #N,
Montebello, CA 90640
-  (323) 485 - 4232
-  Scanner@ETechDental.com
-  www.EtechDental.com